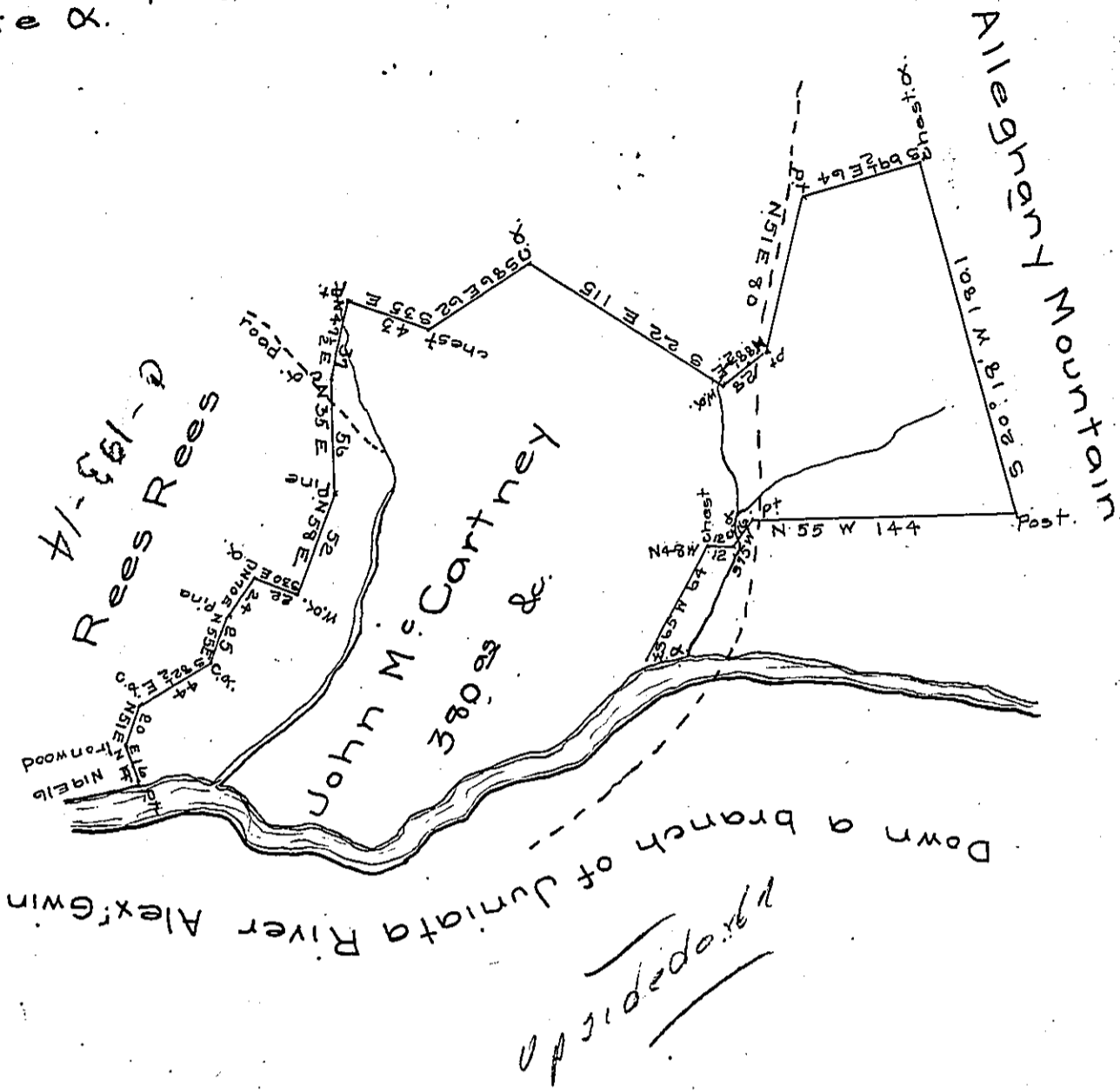


Courses & distances up the river from the post to the white X.

- N 58 W 9
- West 8
- N 46 1/2 W 19
- N 33 1/2 W 19
- N 10 W 10
- N 25 E 45
- N 54 W 12
- N 47 W 20
- N 19 W 21
- N 69 W 14.5
- S 79 W 17
- N 75 W 12
- S 66 W 8
- N 74 W 54
- N 88 W 21
- S 82 1/2 W 20
- West 26 W.α.



Situate Allegheny township Huntingdon County containing three hundred ^{& 90} acres & the usual allowance surveyed Nov. 28th 1838 in pursuance of a warrant for 300^{acs} granted to John McCartney the 22nd day of June 1838.

Jacob Cresswell D.S.

John Taylor Esqr }
S.G.

IN TESTIMONY that the above is a copy of the original remaining on file in the Department of Internal Affairs of Pennsylvania, made conformably to an Act of Assembly approved the 16th day of February, 1833, I have hereunto set my Hand and caused the Seal of said Department to be affixed at Harrisburg, this sixteenth day of April 1906

Isaac R. Brown
Secretary of Internal Affairs.